

\$679,900 - 255140 Range Road 275, Rural Rocky View County

MLS® #A2260830

\$679,900

3 Bedroom, 2.00 Bathroom, 1,504 sqft
Residential on 8.00 Acres

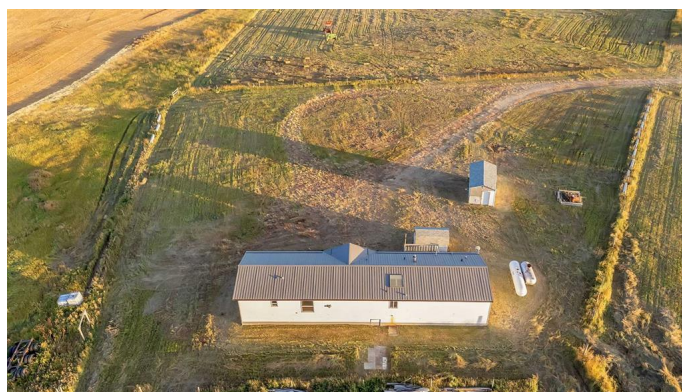
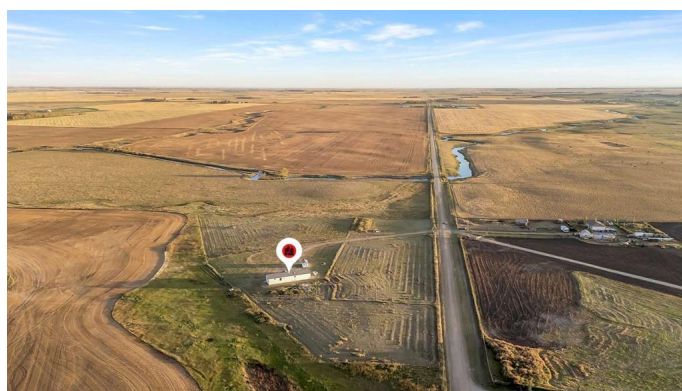
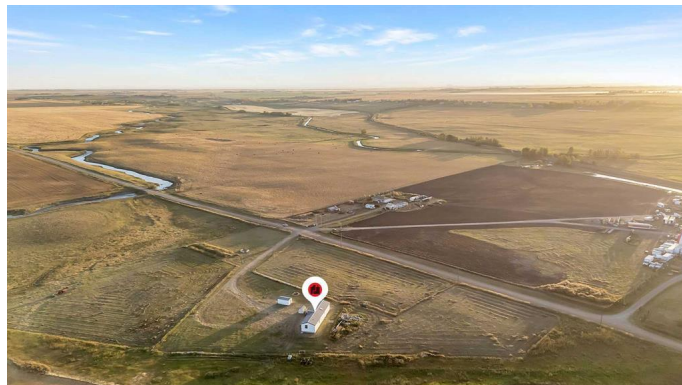
NONE, Rural Rocky View County, Alberta

8 ACRES!! ONE OF THE BEST PRICED ACREAGE NEAR THE CITY OF CALGARY!! ONLY 10 MINS TO CALGARY!! SINGLE DETACHED GARAGE!! Sitting on 8 acres, this well-kept single wide mobile offers a bright open concept floorplan with spacious living, dining, and kitchen areas. The HUGE KITCHEN features ample cabinetry and counter space, while the cozy living room is anchored by a charming fireplace. The home includes 3 BEDROOMS and 2 FULL BATHS, including a PRIMARY BEDROOM with WALK-IN CLOSET and 4PC ENSUITE. The two additional bedrooms also feature walk-in closets and share a full bath. Step outside to enjoy the peaceful setting with a DETACHED SINGLE GARAGE and plenty of room to expand. Perfectly located just 12 minutes from Calgary city limits, this acreage combines country living with city convenience. A RARE OPPORTUNITY TO OWN 8 ACRES SO CLOSE TO THE CITY!!

Built in 2005

Essential Information

MLS® #	A2260830
Price	\$679,900
Bedrooms	3
Bathrooms	2.00



Full Baths	2
Square Footage	1,504
Acres	8.00
Year Built	2005
Type	Residential
Sub-Type	Detached
Style	Acreage with Residence, Single Wide Mobile Home
Status	Active

Community Information

Address	255140 Range Road 275
Subdivision	NONE
City	Rural Rocky View County
County	Rocky View County
Province	Alberta
Postal Code	T1Z 0C6

Amenities

Parking Spaces	10
Parking	RV Access/Parking

Interior

Interior Features	Open Floorplan, Pantry, See Remarks
Appliances	Dishwasher, Dryer, Electric Stove, Microwave Hood Fan, Refrigerator, Washer
Heating	Forced Air, Natural Gas
Cooling	None
Fireplace	Yes
# of Fireplaces	1
Fireplaces	Gas
Basement	None

Exterior

Exterior Features	Other
Lot Description	No Neighbours Behind, See Remarks
Roof	Asphalt Shingle
Construction	Vinyl Siding, Wood Frame
Foundation	Piling(s)

Additional Information

Date Listed	September 29th, 2025
Days on Market	1
Zoning	RF

Listing Details

Listing Office	Real Broker
----------------	-------------

Data is supplied by Pillar 9â„¢ MLS® System. Pillar 9â„¢ is the owner of the copyright in its MLS® System. Data is deemed reliable but is not guaranteed accurate by Pillar 9â„¢. The trademarks MLS®, Multiple Listing Service® and the associated logos are owned by The Canadian Real Estate Association (CREA) and identify the quality of services provided by real estate professionals who are members of CREA. Used under license.