

\$675,000 - 1920 Kelwood Drive Sw, Calgary

MLS® #A2260398

\$675,000

2 Bedroom, 2.00 Bathroom, 880 sqft
Residential on 0.18 Acres

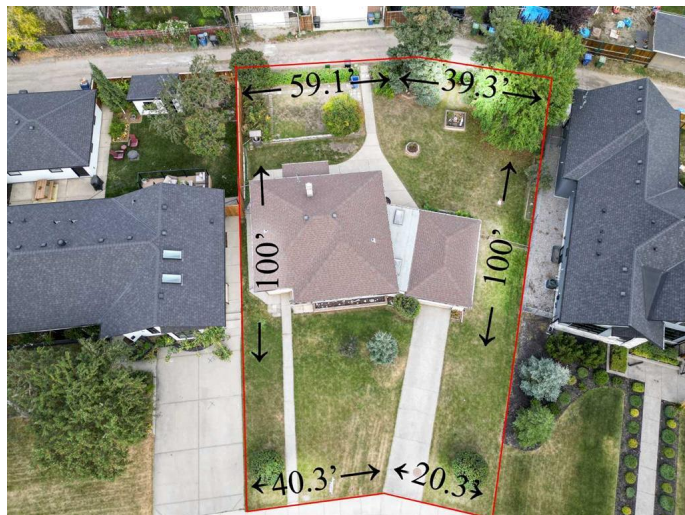
Glendale., Calgary, Alberta

Well-maintained home on an EXTRA-LARGE lot (almost 8,000 sq. ft.) on one of Glendale's most sought-after streets! Upgrades over the last few years include all newer windows, plus roof, furnace, and electrical panel. The home still offers room for your personal touch—imagine refinishing the original hardwood floors to bring back their timeless charm. The attached oversized single garage connects to the home through a spacious covered breezeway—perfect for extra storage. Unbeatable location just off 17th Avenue and a short walk to the LRT. Incredible value for a solid property in a highly desirable community. Here's your opportunity to own in Glendale at an affordable price!

Built in 1954

Essential Information

MLS® #	A2260398
Price	\$675,000
Bedrooms	2
Bathrooms	2.00
Full Baths	1
Half Baths	1
Square Footage	880
Acres	0.18
Year Built	1954



Type	Residential
Sub-Type	Detached
Style	Bungalow
Status	Active

Community Information

Address	1920 Kelwood Drive Sw
Subdivision	Glendale.
City	Calgary
County	Calgary
Province	Alberta
Postal Code	T3E 3Z3

Amenities

Parking Spaces	2
Parking	Driveway, Single Garage Detached
# of Garages	1

Interior

Interior Features	See Remarks
Appliances	Dryer, Electric Stove, Refrigerator, Washer, Window Coverings
Heating	Forced Air
Cooling	None
Has Basement	Yes
Basement	Finished, Full

Exterior

Exterior Features	Private Yard
Lot Description	Back Lane, Back Yard
Roof	Asphalt Shingle
Construction	Vinyl Siding, Wood Frame
Foundation	Poured Concrete

Additional Information

Date Listed	September 30th, 2025
Days on Market	1
Zoning	R-CG

Listing Details

Listing Office

RE/MAX Realty Professionals

Data is supplied by Pillar 9â„¸ MLSÂ® System. Pillar 9â„¸ is the owner of the copyright in its MLSÂ® System. Data is deemed reliable but is not guaranteed accurate by Pillar 9â„¸. The trademarks MLSÂ®, Multiple Listing ServiceÂ® and the associated logos are owned by The Canadian Real Estate Association (CREA) and identify the quality of services provided by real estate professionals who are members of CREA. Used under license.