

\$510,000 - 330 Ranch Garden, Strathmore

MLS® #A2258400

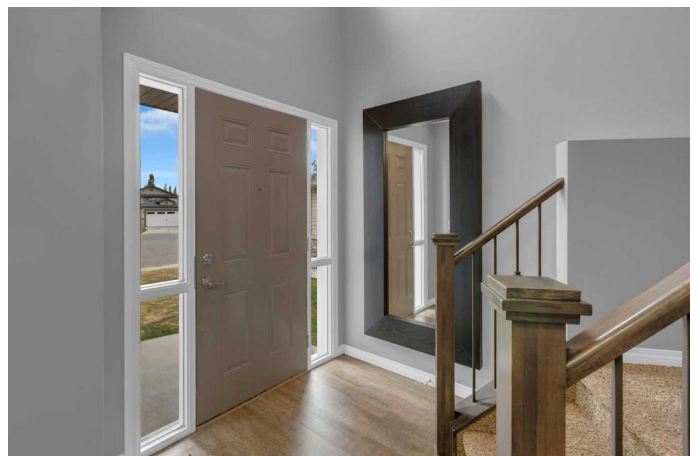
\$510,000

3 Bedroom, 3.00 Bathroom, 1,347 sqft

Residential on 0.10 Acres

The Ranch_Strathmore, Strathmore, Alberta

Welcome to 330 Ranch Garden â€” the perfect detached family home tucked away at the end of a quiet cul-de-sac in The Ranch, Strathmore, with only the attached garage sharing a common wall. From the moment you walk through the front door, youâ€™re greeted by a grand entrance and sweeping staircase that set the tone for this inviting two-story. The main floor has been refreshed with new flooring and features a bright living room anchored by an upgraded fireplace and mantel â€” the kind of space that invites cozy evenings together. West-facing windows in the living and dining areas fill the home with natural light, while the large kitchen â€” complete with granite countertops, extra cabinetry, and new appliances â€” is designed for family meals and gatherings. Everyday life is made easier with a spacious mudroom, laundry, and half bath tucked off the attached garage. Step outside and enjoy the west-facing backyard with mature trees for privacy, a large deck for summer barbecues, and plenty of room for kids or pets to play. Upstairs, three bedrooms offer comfort and space for the whole family. The primary suite is a true retreat with its own ensuite and walk-in closet, while two additional bedrooms share a full bathroom â€” perfect for kids, guests, or a home office. The lower level is unfinished, offering a blank canvas to make it your own, with bathroom rough-ins already in place. With its thoughtful upgrades, welcoming layout, and family-friendly location, 330 Ranch



Garden isnâ€™t just a house â€“ itâ€™s a place to put down roots and grow together.

Built in 2011

Essential Information

MLS® #	A2258400
Price	\$510,000
Bedrooms	3
Bathrooms	3.00
Full Baths	2
Half Baths	1
Square Footage	1,347
Acres	0.10
Year Built	2011
Type	Residential
Sub-Type	Semi Detached
Style	2 Storey, Side by Side
Status	Active

Community Information

Address	330 Ranch Garden
Subdivision	The Ranch_Strathmore
City	Strathmore
County	Wheatland County
Province	Alberta
Postal Code	T1P 0C1

Amenities

Parking Spaces	4
Parking	Concrete Driveway, Double Garage Attached, Garage Faces Front
# of Garages	2

Interior

Interior Features	Closet Organizers, Granite Counters, Kitchen Island, Pantry, Sump Pump(s)
Appliances	Dishwasher, Dryer, Electric Stove, Microwave, Refrigerator, Washer
Heating	Forced Air, Natural Gas
Cooling	None

Fireplace	Yes
# of Fireplaces	1
Fireplaces	Gas, Living Room, Mantle
Has Basement	Yes
Basement	Full, Unfinished

Exterior

Exterior Features	Fire Pit
Lot Description	Back Yard, Cul-De-Sac, Front Yard, Lawn, Treed
Roof	Asphalt Shingle
Construction	Vinyl Siding
Foundation	Poured Concrete

Additional Information

Date Listed	October 2nd, 2025
Days on Market	1
Zoning	R1

Listing Details

Listing Office	CIR Realty
----------------	------------

Data is supplied by Pillar 9â„¢ MLS® System. Pillar 9â„¢ is the owner of the copyright in its MLS® System. Data is deemed reliable but is not guaranteed accurate by Pillar 9â„¢. The trademarks MLS®, Multiple Listing Service® and the associated logos are owned by The Canadian Real Estate Association (CREA) and identify the quality of services provided by real estate professionals who are members of CREA. Used under license.