

# \$699,900 - 240 Corvette Crescent S, Lethbridge

MLS® #A2254798

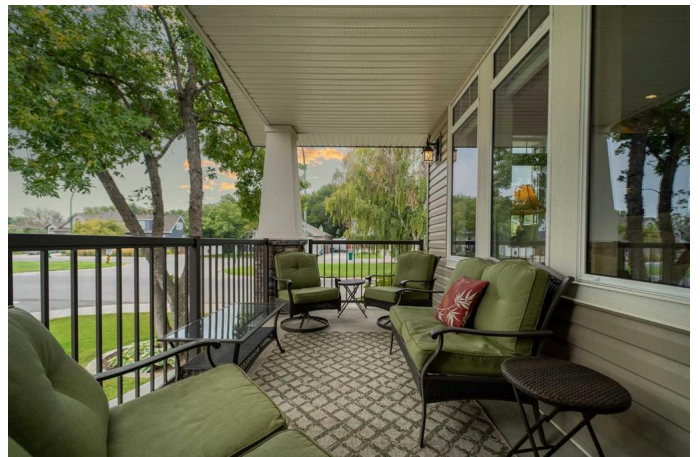
**\$699,900**

4 Bedroom, 4.00 Bathroom, 1,310 sqft

Residential on 0.11 Acres

Glendale, Lethbridge, Alberta

Stunning custom-built bungalow in one of South Lethbridge's most desirable areas. Perfectly positioned on the corner of Corvette and Dieppe, this home offers an unbeatable combination of modern comfort, flexible living, and a prime location just minutes from Henderson Lake and all its amenities. Built in 2016, this 1,310 sq ft bungalow offers 4 bedrooms and 4 bathrooms across two fully developed levels. The main floor has been designed with both elegance and practicality in mind. Soaring 9-foot ceilings and oversized windows fill the home with natural light, while rich hardwood flooring and a welcoming gas fireplace set the tone for relaxed yet refined living. The kitchen combines style with function, featuring granite countertops, abundant cabinetry, and a generous pantry. Just steps away, you'll find the convenience of main-floor laundry, thoughtfully tucked beside the kitchen for easy access. The primary suite is a private retreat with double sinks in the ensuite, and a second bedroom on the main floor doubles perfectly as a home office or den. A stylish 2-piece powder room completes this level for added convenience. The lower level expands the home's versatility with a family room, additional bedroom, and full bath on one side, while the other is finished as a 635 sq ft non-conforming suite with its own entrance. Built with dual drywall ceilings and additional insulation for enhanced soundproofing, this space includes a full kitchen, living and dining



area, bedroom, and full bath, along with hookups for its own laundry. It has been prepped with wiring for electric baseboard heating and a built-in air exchanger awaiting final connection, offering comfort and independence for extended family or rental potential. Outdoor living is equally impressive. A covered front porch sets the stage for morning coffee or evening relaxation, while the landscaped yard is enclosed with premium vinyl fencing and framed by mature trees, creating a sense of privacy and calm. Underground sprinklers keep the property lush, and the corner lot setting provides extra green space along Dieppe. Car enthusiasts or hobbyists will appreciate the rare dual-garage setup. The attached front garage is fully insulated, finished with Pro-Slat paneling, roughed-in for gas heating, and pre-wired for EV charging. The detached rear garage is also fully insulated with Pro-Slat paneling, already has EV charging installed, and is ready for gas heating as well. Together, these spaces offer unmatched flexibility for parking, storage, or workshop use. This home truly blends modern construction with thoughtful design. With its sought-after location, flexible living spaces, private suite potential, and exceptional outdoor and garage amenities, it represents a rare opportunity in one of Lethbridge’s most established and desirable neighborhoods.

Built in 2016

**Essential Information**

MLS® #	A2254798
Price	\$699,900
Bedrooms	4
Bathrooms	4.00
Full Baths	3
Half Baths	1
Square Footage	1,310

Acres	0.11
Year Built	2016
Type	Residential
Sub-Type	Detached
Style	Bungalow
Status	Active

### Community Information

Address	240 Corvette Crescent S
Subdivision	Glendale
City	Lethbridge
County	Lethbridge
Province	Alberta
Postal Code	T1J 3X8

### Amenities

Parking Spaces	3
Parking	Alley Access, Concrete Driveway, Driveway, Garage Faces Front, Garage Faces Rear, Off Street, Single Garage Attached, In Garage Electric Vehicle Charging Station(s), Single Garage Detached
# of Garages	2

### Interior

Interior Features	Beamed Ceilings, Breakfast Bar, Double Vanity, Granite Counters, Kitchen Island, No Animal Home, No Smoking Home, Open Floorplan, Pantry, Recessed Lighting, Separate Entrance
Appliances	Central Air Conditioner, Dishwasher, Electric Stove, Garage Control(s), Microwave Hood Fan, Refrigerator, Washer/Dryer, Window Coverings
Heating	Forced Air, Natural Gas
Cooling	Central Air
Fireplace	Yes
# of Fireplaces	1
Fireplaces	Gas, Living Room
Has Basement	Yes
Basement	Exterior Entry, Finished, Full, Walk-Up To Grade

### Exterior

Exterior Features	Private Yard
Lot Description	Back Yard, Corner Lot, Treed
Roof	Asphalt Shingle

Construction	Vinyl Siding
Foundation	Poured Concrete

### **Additional Information**

Date Listed	September 6th, 2025
Days on Market	25
Zoning	R-L

### **Listing Details**

Listing Office	REAL BROKER
----------------	-------------

Data is supplied by Pillar 9â„¢ MLS® System. Pillar 9â„¢ is the owner of the copyright in its MLS® System. Data is deemed reliable but is not guaranteed accurate by Pillar 9â„¢. The trademarks MLS®, Multiple Listing Service® and the associated logos are owned by The Canadian Real Estate Association (CREA) and identify the quality of services provided by real estate professionals who are members of CREA. Used under license.