

\$589,000 - 226 Chelsea Heath, Chestermere

MLS® #A2233273

\$589,000

3 Bedroom, 3.00 Bathroom, 1,620 sqft
Residential on 0.08 Acres

Chelsea_CH, Chestermere, Alberta

*****Stunning 3-Bedroom, 2.5-Bath Home with
Tons of Upgrades & Large Lot*****

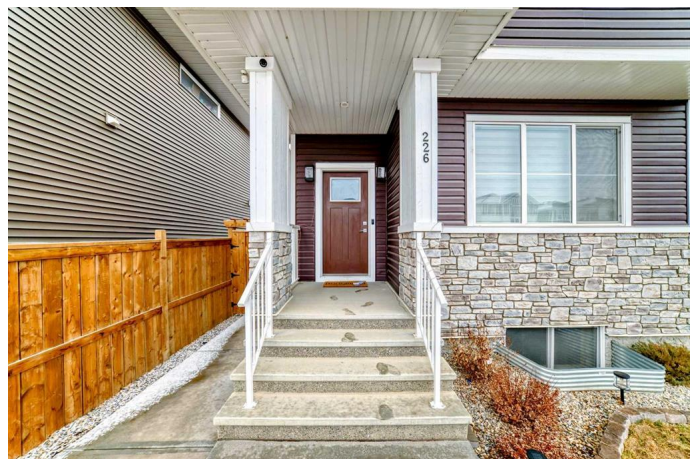
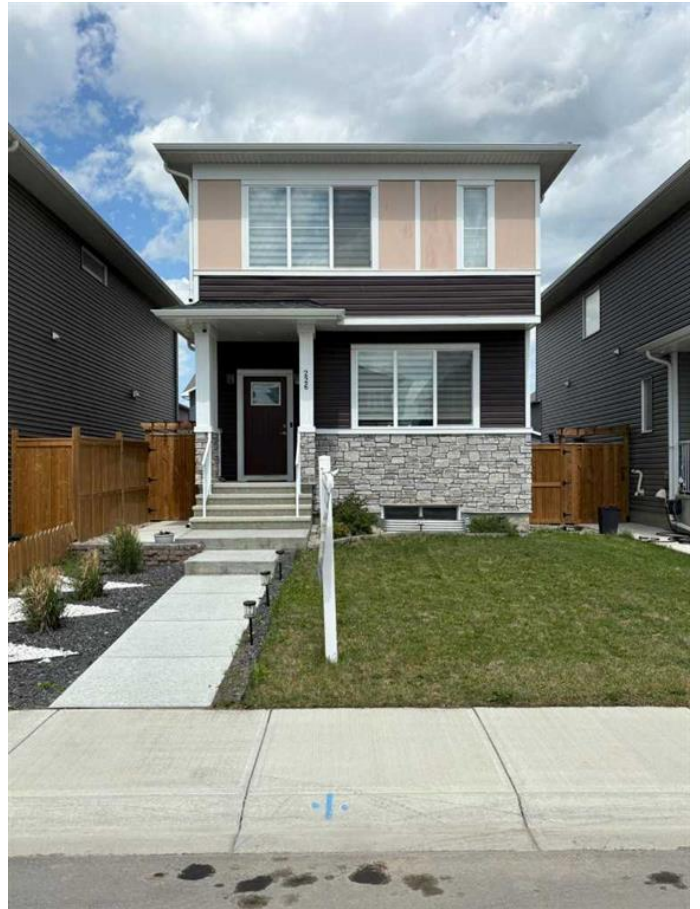
Located in a prime area close to parks, schools, and grocery stores, this beautifully upgraded 2022-built home offers approximately 1,650 sq. ft. of living space with an additional 3,300+ sq. ft. of traditional lot. With modern finishes and thoughtful upgrades by the current owner, this home combines comfort and style in every corner.

Main Level Features:

Open-concept living and dining areas, perfect for entertaining
Upgraded kitchen with premium appliances, quartz countertops, and ample storage
Durable LVP flooring throughout, with ceramic tile accents
Convenient 2-piece bath for guests
Charming exterior with vinyl and stone finishes, along with front landscaping
Included: Central air conditioner and water softener for added convenience

Upstairs Features:

Spacious bonus room ideal for a home office or playroom
Master bedroom with large windows and a 3-piece ensuite
Two additional well-sized bedrooms with a second full bathroom
Laundry room for added convenience
Additional Highlights:



Unfinished basement, offering endless potential for customization
Fully landscaped, fenced backyard with a stamped concrete patioâ€”perfect for outdoor gatherings
Oversized concrete parking pad for extra parking space
This is a must-see home that combines modern amenities with thoughtful upgrades throughout. Donâ€™t miss the opportunity to own this beautiful property. Schedule your showing today!

Built in 2022

Essential Information

MLS® #	A2233273
Price	\$589,000
Bedrooms	3
Bathrooms	3.00
Full Baths	2
Half Baths	1
Square Footage	1,620
Acres	0.08
Year Built	2022
Type	Residential
Sub-Type	Detached
Style	2 Storey
Status	Active

Community Information

Address	226 Chelsea Heath
Subdivision	Chelsea_CH
City	Chestermere
County	Chestermere
Province	Alberta
Postal Code	T1X 1Z5

Amenities

Parking Spaces	2
----------------	---

Parking Parking Pad, Rear Drive

Interior

Interior Features Chandelier, Kitchen Island, P
Storage, Tray Ceiling(s), Wal

Appliances Central Air Conditioner,
Refrigerator, Washer/Dryer S

Heating Forced Air, Natural Gas

Cooling Central Air, ENERGY STAR C

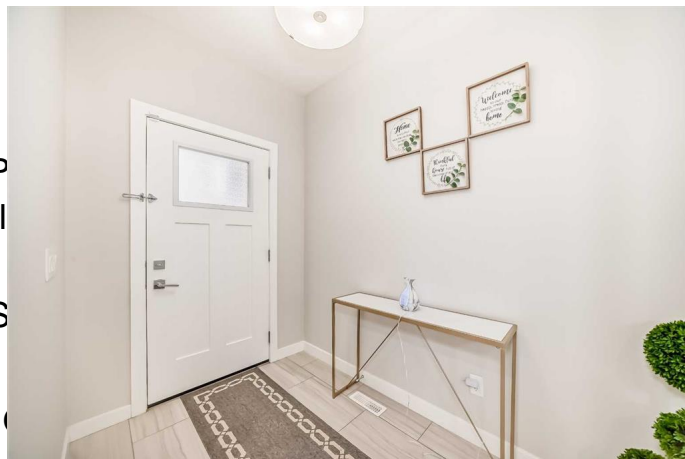
Fireplace Yes

of Fireplaces 1

Fireplaces Electric, Living Room

Has Basement Yes

Basement Exterior Entry, See Remarks, Unfinished



Exterior

Exterior Features Private Yard

Lot Description Back Lane, Landscaped

Roof Asphalt Shingle

Construction Concrete, Vinyl Siding, Wood Frame

Foundation Poured Concrete

Additional Information

Date Listed June 20th, 2025

Days on Market 10

Zoning R1

Listing Details

Listing Office eXp Realty

Data is supplied by Pillar 9â„¢ MLSÂ® System. Pillar 9â„¢ is the owner of the copyright in its MLSÂ® System. Data is deemed reliable but is not guaranteed accurate by Pillar 9â„¢. The trademarks MLSÂ®, Multiple Listing ServiceÂ® and the associated logos are owned by The Canadian Real Estate Association (CREA) and identify the quality of services provided by real estate professionals who are members of CREA. Used under license.