

# \$699,900 - 256 Springmere Way, Chestermere

MLS® #A2227674

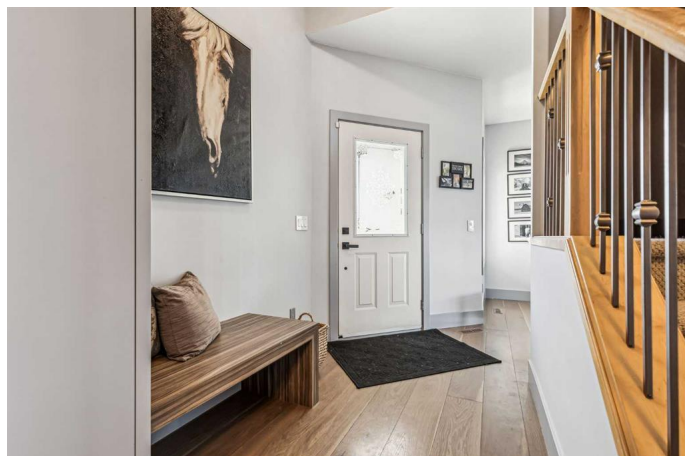
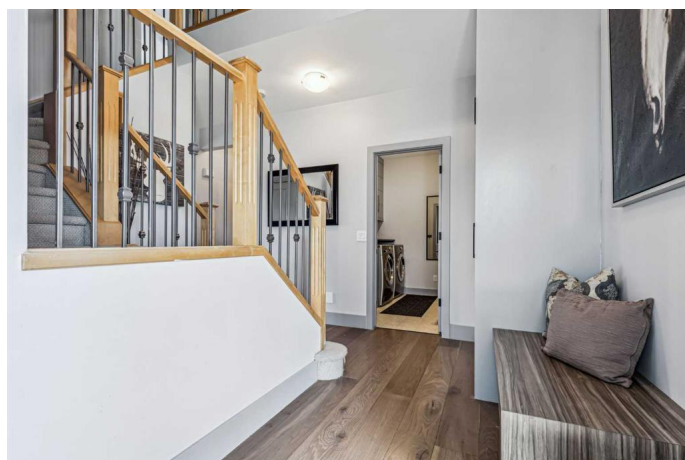
**\$699,900**

4 Bedroom, 4.00 Bathroom, 2,002 sqft

Residential on 0.13 Acres

Westmere, Chestermere, Alberta

Welcome to this beautifully updated home in Westmere, perfect for modern family living! Featuring a professionally renovated kitchen and living room with an open floor plan, hardwood flooring, high end integrated grills, and painted ceilings, this space is ideal for entertaining and everyday comfort. The kitchen boasts elegant quartz countertops, beautiful integrated appliances, a custom-built in breakfast table and ample storage—blending functionality with style. Enjoy the convenience of main-floor laundry and a spacious double attached garage. Upstairs, you'll find three generously sized bedrooms, including a luxurious primary suite with a large ensuite bath and a versatile bonus room—perfect for a home office, playroom, or media lounge. The lower level features new carpet and commercial grade gym floor, additional bedroom, newly renovated bathroom, amazing gym space and media/office space. Located in a family-friendly neighbourhood of Westmere, this home offers a huge west-facing, unobstructed backyard, featuring a built-in custom fire table, cedar pergola with privacy screen ideal for kids, pets, and summer gatherings. On the exterior, the roof has been replaced within the last year. New proposed schools nearby, along with current elementary, junior high/high school within a 6-minute walk, parks, shopping, and amenities nearby, plus easy access to the highway, you'll love both the home and the location.



Built in 2003

### **Essential Information**

|                |             |
|----------------|-------------|
| MLS® #         | A2227674    |
| Price          | \$699,900   |
| Bedrooms       | 4           |
| Bathrooms      | 4.00        |
| Full Baths     | 3           |
| Half Baths     | 1           |
| Square Footage | 2,002       |
| Acres          | 0.13        |
| Year Built     | 2003        |
| Type           | Residential |
| Sub-Type       | Detached    |
| Style          | 2 Storey    |
| Status         | Active      |

### **Community Information**

|             |                    |
|-------------|--------------------|
| Address     | 256 Springmere Way |
| Subdivision | Westmere           |
| City        | Chestermere        |
| County      | Chestermere        |
| Province    | Alberta            |
| Postal Code | T1X 1P1            |

### **Amenities**

|                |                        |
|----------------|------------------------|
| Parking Spaces | 4                      |
| Parking        | Double Garage Attached |
| # of Garages   | 2                      |

### **Interior**

|                   |  |
|-------------------|--|
| Interior Features | Bookcases, Built-in Features, Central Vacuum, Kitchen Island, Open Floorplan, Quartz Counters  |
| Appliances        | Built-In Oven, Dishwasher, Dryer, Electric Stove, Garage Control(s), Garburator, Microwave, Range Hood, Refrigerator, Washer, Window Coverings |
| Heating           | Central  |

|                 |                |
|-----------------|----------------|
| Cooling         | None           |
| Fireplace       | Yes            |
| # of Fireplaces | 1              |
| Fireplaces      | Gas            |
| Has Basement    | Yes            |
| Basement        | Finished, Full |

## Exterior

|                   |                                    |
|-------------------|------------------------------------|
| Exterior Features | Private Yard                       |
| Lot Description   | Back Yard, Front Yard              |
| Roof              | Asphalt Shingle                    |
| Construction      | Concrete, Vinyl Siding, Wood Frame |
| Foundation        | Poured Concrete                    |

## Additional Information

|                |                |
|----------------|----------------|
| Date Listed    | June 4th, 2025 |
| Days on Market | 26             |
| Zoning         | R-1            |

## Listing Details

|                |                                |
|----------------|--------------------------------|
| Listing Office | Real Estate Professionals Inc. |
|----------------|--------------------------------|

Data is supplied by Pillar 9â„¢ MLSÂ® System. Pillar 9â„¢ is the owner of the copyright in its MLSÂ® System. Data is deemed reliable but is not guaranteed accurate by Pillar 9â„¢. The trademarks MLSÂ®, Multiple Listing ServiceÂ® and the associated logos are owned by The Canadian Real Estate Association (CREA) and identify the quality of services provided by real estate professionals who are members of CREA. Used under license.