

# \$725,000 - 2825 Coopers Manor Sw, Airdrie

MLS® #A2221036

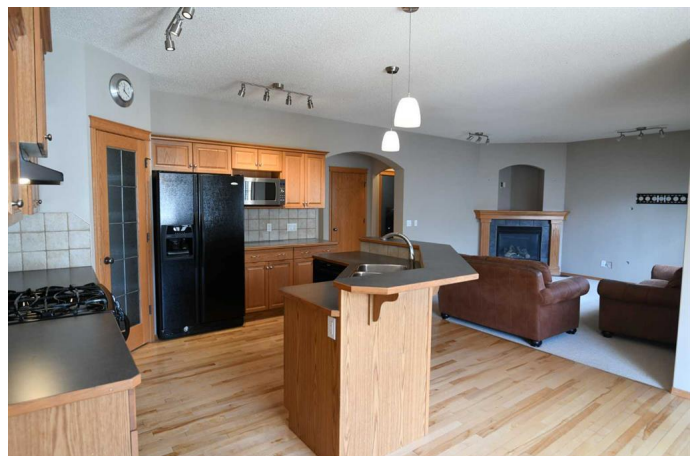
## \$725,000

3 Bedroom, 4.00 Bathroom, 1,791 sqft

Residential on 0.11 Acres

Coopers Crossing, Airdrie, Alberta

A rare opportunity in Coopers Crossing, with 3 bedrooms, a large vaulted bonus room, and TWO HEATED GARAGES. A great family home with an open main floor layout, & notably large windows for great natural light. 9' ceiling truly gives a sense of volume in the space. Neutral tones throughout, with maple hardwood through the main floor, plus an accent carpet area in the living room, with a corner gas fireplace and mantel. Island kitchen with a breakfast bar, large corner pantry, black appliance package including a fantastic GE gas stove, a French door fridge with ice and water, and a Bosch dishwasher. A covered porch welcomes you to the proper front entrance with a generous closet. Main floor laundry with front load washer & dryer on pedestals. Extra storage shelving in the mud / laundry room works well for a busy household. Open staircase to the vaulted ceiling bonus room with extra windows, great for family time or entertaining. All three bedrooms are set away from the family spaces, and the master suite will easily support king sized furniture, and has a true 4 piece ensuite with a soaker tub, glass shower, and a walk in closet. A great, raised deck is accessed from the kitchen eating area, and leads onto a low maintenance concrete patio. This great home has not just one heated double garage, but TWO of them. The oversized, detached shop is accessed from the paved rear lane, and has a 10' ceiling, cavernous storage attic, and even it's own washroom. Anyone with



hobbies, extra vehicles, toys, or the need for workspace and storage options that are hard to find, look no further. The unspoiled basement was built with large windows, and has a great layout and ceiling height. This McKee Homes gem is truly one of a kind. Add your own touches to it and make it yours.

Built in 2005

### Essential Information

MLS® #	A2221036
Price	\$725,000
Bedrooms	3
Bathrooms	4.00
Full Baths	2
Half Baths	2
Square Footage	1,791
Acres	0.11
Year Built	2005
Type	Residential
Sub-Type	Detached
Style	2 Storey
Status	Active

### Community Information

Address	2825 Coopers Manor Sw
Subdivision	Coopers Crossing
City	Airdrie
County	Airdrie
Province	Alberta
Postal Code	T5B 3J8

### Amenities

Amenities	Other
Parking Spaces	6
Parking	Alley Access, Double Garage Attached, Double Garage Detached, Driveway, Front Drive, Garage Door Opener, Garage Faces Front, Garage Faces Rear, Heated Garage, Insulated, Oversized, Quad or

	More Attached, Quad or More Detached, Rear Drive, See Remarks, Triple Garage Attached, Triple Garage Detached, Workshop in Garage
# of Garages	4

### Interior

Interior Features	Breakfast Bar, Ceiling Fan(s), High Ceilings, Kitchen Island, Soaking Tub
Appliances	Central Air Conditioner, Dishwasher, Garage Control(s), Gas Stove, Gas Water Heater, Microwave, Range Hood, Refrigerator, Washer/Dryer, Window Coverings
Heating	Fireplace(s), Forced Air, Natural Gas
Cooling	Central Air
Fireplace	Yes
# of Fireplaces	1
Fireplaces	Gas, Glass Doors, Living Room, Mantle
Has Basement	Yes
Basement	Full, Unfinished

### Exterior

Exterior Features	BBQ gas line
Lot Description	Back Lane, Back Yard, Low Maintenance Landscape, Rectangular Lot
Roof	Asphalt Shingle
Construction	Stone, Vinyl Siding, Wood Frame
Foundation	Poured Concrete

### Additional Information

Date Listed	May 13th, 2025
Days on Market	47
Zoning	R1
HOA Fees	71
HOA Fees Freq.	ANN

### Listing Details

Listing Office	RE/MAX River City
----------------	-------------------

Data is supplied by Pillar 9â„¢ MLSÂ® System. Pillar 9â„¢ is the owner of the copyright in its MLSÂ® System. Data is deemed reliable but is not guaranteed accurate by Pillar 9â„¢. The trademarks MLSÂ®, Multiple Listing ServiceÂ® and the associated logos are owned by The Canadian Real Estate Association (CREA) and identify the quality of services provided by real estate professionals who are members of CREA. Used under license.