

\$673,650 - 233 Chelsea Court, Chestermere

MLS® #A2216860

\$673,650

4 Bedroom, 3.00 Bathroom, 2,100 sqft
Residential on 0.08 Acres

Chelsea_CH, Chestermere, Alberta

Discover the Caspian â€” a beautifully designed front garage duplex offering style, comfort, and functionality. The main floor features a flex room and full bathroom, LVP flooring, an electric fireplace with floor-to-ceiling tile, and a modern kitchen with stainless steel appliances, gas range, chimney hood fan, walk-in pantry, and fridge with water/ice dispenser. Step out to the rear wood deck (11'6" x 10') with a privacy wall and BBQ gasline RI. Upstairs offers a 3-piece ensuite with fully tiled walk-in shower. Enjoy 9' basement ceilings, a convenient side entrance, and elegant paint-grade railings with iron spindles. Photos are representative.



Built in 2024

Essential Information

MLS® #	A2216860
Price	\$673,650
Bedrooms	4
Bathrooms	3.00
Full Baths	3
Square Footage	2,100
Acres	0.08
Year Built	2024
Type	Residential
Sub-Type	Semi Detached
Style	2 Storey, Side by Side
Status	Active

Community Information

Address	233 Chelsea Court
Subdivision	Chelsea_CH
City	Chestermere
County	Chestermere
Province	Alberta
Postal Code	T1X2Z4

Amenities

Amenities	None
Parking Spaces	4
Parking	Double Garage Attached
# of Garages	2

Interior

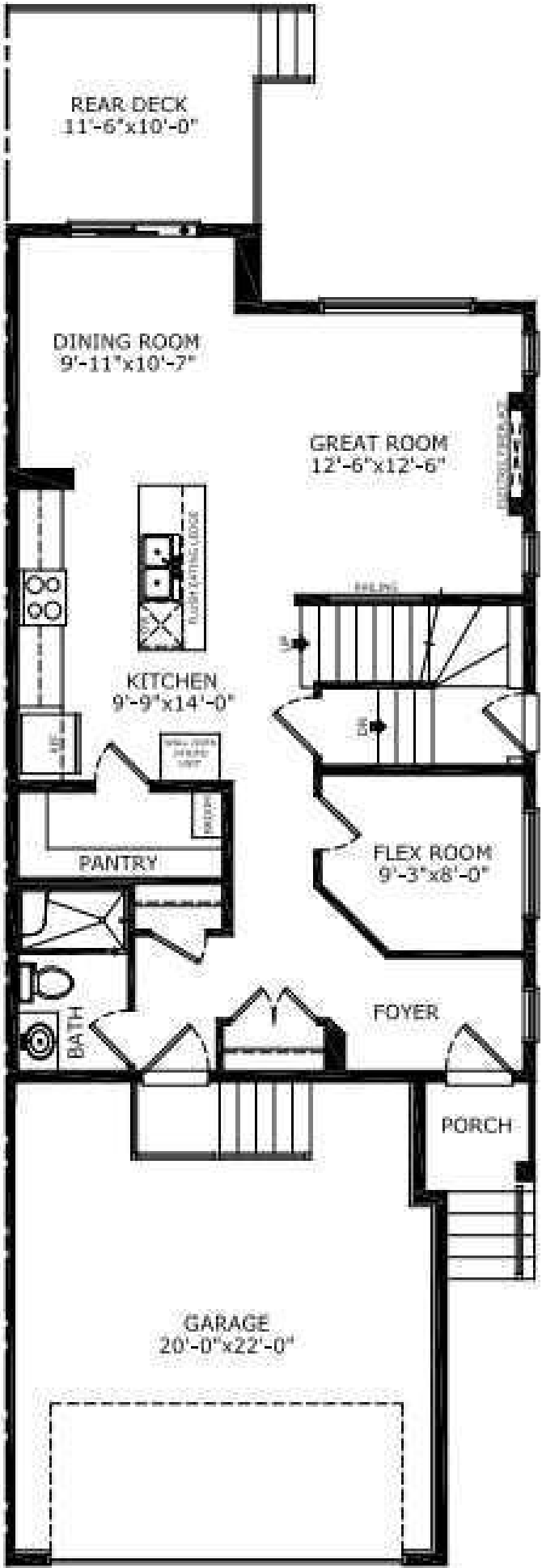
Interior Features	French Door, Kitchen Island, Entrance, Tankless Hot Water
Appliances	Dishwasher, Gas Range, Tankless Water Heater
Heating	Forced Air, Natural Gas
Cooling	None
Fireplace	Yes
# of Fireplaces	1
Fireplaces	Decorative, Electric
Has Basement	Yes
Basement	Full, Unfinished

Exterior

Exterior Features	Lighting
Lot Description	Back Yard
Roof	Asphalt Shingle
Construction	Stone, Vinyl Siding, Wood Frame
Foundation	Poured Concrete

Additional Information

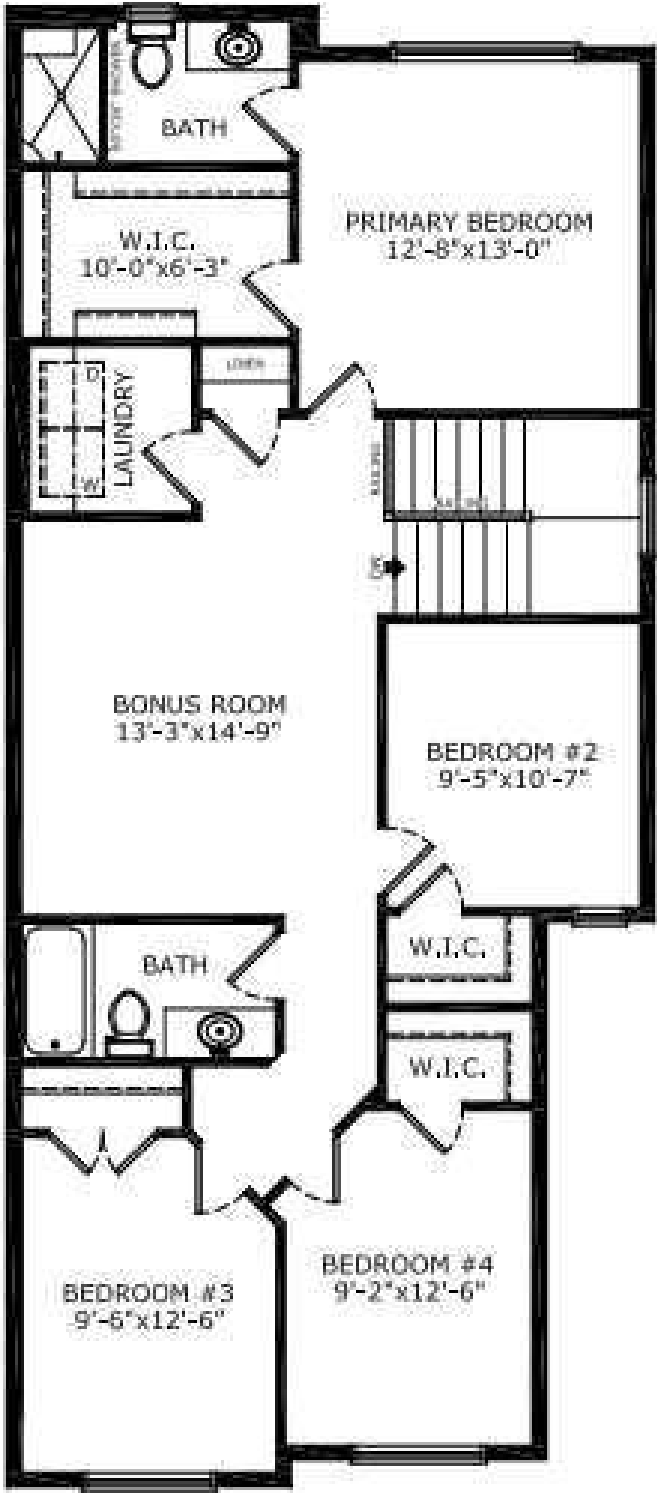
Date Listed	May 5th, 2025
Days on Market	11
Zoning	TBD
HOA Fees	200



HOA Fees Freq. ANN

Listing Details

Listing Office Bode Platform Inc.



deemed reliable but is not guaranteed accurate by Pillar 9â„¸. The trademarks MLSÂ®, Multiple Listing ServiceÂ® and the associated logos are owned by The Canadian Real Estate Association (CREA) and identify the quality of services provided by real estate professionals who are members of CREA. Used under license.