

\$384,900 - 1501, 650 10 Street Sw, Calgary

MLS® #A2203426

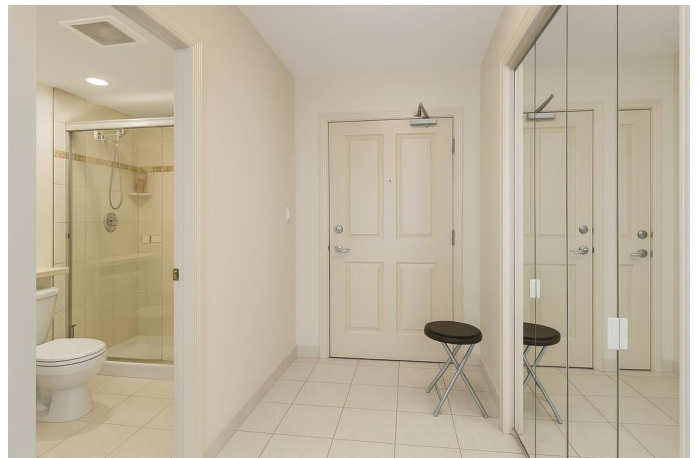
\$384,900

2 Bedroom, 2.00 Bathroom, 951 sqft

Residential on 0.00 Acres

Downtown West End, Calgary, Alberta

Price Reduction !! \$384,500 !! Motivated seller !! This stylish, move-in ready condo delivers unbeatable downtown convenience, just steps from a free C-Train station, with two parking stalls and all the perks of vibrant urban living. Don't miss this rare opportunity – act fast and make it yours today! Your Dream Downtown Condo Awaits at AXXIS! Welcome to one of the most desirable and smartly designed corner units in the heart of West Downtown Calgary! This bright and spacious 2-bedroom, 2 full bathroom home in the prestigious AXXIS building offers the perfect blend of design, functionality, and location. Enjoy the rare bonus of 2 Parking Stalls, Air Conditioning, and a large Storage Locker – everything you need for comfortable downtown living. Situated on the sun-drenched southwest corner, this unit is flooded with natural light thanks to stunning wrap-around floor-to-ceiling windows. Step into a well-appointed kitchen with a central island, ideal for entertaining or prepping your favourite meals. The open-concept layout features a cozy gas fireplace, a dedicated dining area, in-suite laundry, and a large in-suite storage room for added convenience. The AXXIS lifestyle doesn't stop at your door – residents enjoy a well-equipped gym, bike storage, a stylish *Owners' Lounge *perfect for hosting events (up to 90 guests!), a massive rooftop garden, and secure covered visitor parking. With on-site management and a strong sense of community, this building truly



stands out in its thoughtful design and utility. Located just half a block from the LRT (in the free fare zone), and mere steps from the river pathways, restaurants, shops, and entertainmentâ€”youâ€™ll love the walkability and connectivity this location offers, to what matters most in Downtown Calgary. Donâ€™t miss your chance to own this incredible downtown gem. Contact your favorite real estate agent today to book a private tour!

Built in 2000

Essential Information

| | |
|----------------|-------------------|
| MLS® # | A2203426 |
| Price | \$384,900 |
| Bedrooms | 2 |
| Bathrooms | 2.00 |
| Full Baths | 2 |
| Square Footage | 951 |
| Acres | 0.00 |
| Year Built | 2000 |
| Type | Residential |
| Sub-Type | Apartment |
| Style | Single Level Unit |
| Status | Active |

Community Information

| | |
|-------------|------------------------|
| Address | 1501, 650 10 Street Sw |
| Subdivision | Downtown West End |
| City | Calgary |
| County | Calgary |
| Province | Alberta |
| Postal Code | T2P 5G4 |

Amenities

| | |
|----------------|---|
| Amenities | Elevator(s), Fitness Center, Parking, Visitor Parking, Other, Party Room, Trash |
| Parking Spaces | 2 |
| Parking | Stall, Underground, Assigned, Heated Garage, Parkade |

Interior

| | |
|-------------------|--|
| Interior Features | No Animal Home, No Smoking Home, Open Floorplan, Vinyl Windows |
| Appliances | Central Air Conditioner, Dishwasher, Dryer, Electric Stove, Microwave Hood Fan, Refrigerator, Washer |
| Heating | Baseboard, Electric |
| Cooling | Central Air |
| Fireplace | Yes |
| # of Fireplaces | 1 |
| Fireplaces | Gas |
| # of Stories | 25 |

Exterior

| | |
|-------------------|-------------------------|
| Exterior Features | Balcony |
| Construction | Brick, Concrete, Stucco |

Additional Information

| | |
|----------------|------------------|
| Date Listed | March 19th, 2025 |
| Days on Market | 58 |
| Zoning | DC |

Listing Details

| | |
|----------------|------------------------------------|
| Listing Office | RE/MAX Real Estate (Mountain View) |
|----------------|------------------------------------|

Data is supplied by Pillar 9â„¢ MLSÂ® System. Pillar 9â„¢ is the owner of the copyright in its MLSÂ® System. Data is deemed reliable but is not guaranteed accurate by Pillar 9â„¢. The trademarks MLSÂ®, Multiple Listing ServiceÂ® and the associated logos are owned by The Canadian Real Estate Association (CREA) and identify the quality of services provided by real estate professionals who are members of CREA. Used under license.